

## Clapet anti retour RWC



### Clapet anti-retour simple RWC - 3/4" FBSP - Laiton DZR

Réf FLOW235005 **10.08€<sup>TTC\*</sup>**

<https://www.domomat.com/495858-clapet-anti-retour-simple-rwc-34-fbsp-laiton-dzr-rwc-flow235005.html>



### Clapet anti-retour simple RWC - 1/2" FBSP - Laiton DZR

Réf FLOW235004 **5.60€<sup>TTC\*</sup>**

<https://www.domomat.com/495859-clapet-anti-retour-simple-rwc-12-fbsp-laiton-dzr-rwc-flow235004.html>



### Clapet anti-retour simple RWC - 1" FBSP - Laiton DZR

Réf FLOW235006 **16.51€<sup>TTC\*</sup>**

<https://www.domomat.com/495860-clapet-anti-retour-simple-rwc-1-fbsp-laiton-dzr-rwc-flow235006.html>

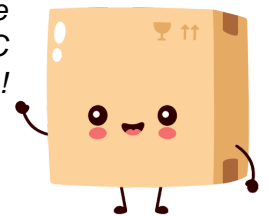


### Clapet anti-retour simple RWC - 1 1/2" FBSP - Laiton DZR

Réf FLOW235008 **42.25€<sup>TTC\*</sup>**

<https://www.domomat.com/495861-clapet-anti-retour-simple-rwc-1-fbsp-laiton-dzr-rwc-flow235008.html>

Retrouvez tous les produits de la catégorie  
Clapet et crépine RWC  
chez Domomat !



\* : Prix sur le site Domomat.com au 20/10/2024. Le prix est susceptible d'être modifié.



## FLOGUARD® SINGLE CHECK VALVES

FLOW235001	15mm Single check valve, DZR brass
FLOW235002	22mm Single check valve, DZR brass
FLOW235003	28mm Single check valve, DZR brass
FLOW235004	1/2" FBSP Single check valve, DZR brass
FLOW235005	3/4" FBSP Single check valve, DZR brass
FLOW235006	1" FBSP Single check valve, DZR brass
FLOW235007	1 1/4" FBSP Single check valve, DZR brass
FLOW235008	1 1/2" FBSP Single check valve, DZR brass
FLOW235009	2" FBSP Single check valve, DZR brass

### OVERVIEW

Manufactured from DZR brass the WRAS approved Floguard single check valve is used for the prevention of backflow and back-siphonage contamination risks in accordance with the Water Supply (water fitting) Regulations 1999.



WATER CONTROLS FOR A MODERN WORLD

**RELIANCE**

TEMPERATURE  
CONTROL

FLOW  
CONTROL

HEATING SYSTEM  
COMPONENTS

WASHROOM  
SYSTEMS

HEATING & COOLING  
DISTRIBUTION SYSTEMS

PLUMBING  
SYSTEMS

# FLOGUARD® SINGLE CHECK VALVES

## FEATURES AND BENEFITS

- Single check valves protect against the risk of backflow and back-siphonage contaminations
- Compact lightweight construction for easy installation
- Minimum pressure drop giving good flow rates
- Ideal for all Class 2 contamination risks as per Water Supply (water fittings) Regulations 1999
- Available with a comprehensive selection of FBSP and compression connections

## STANDARDS AND APPROVALS

- BSEN 13959
- WRAS Approved

## HOW TO SPECIFY

Single check valve supplied in DZR Brass suitable for all Class 2 contamination risks with FBSP or compression style connections. (Include correct product range code)

## SPECIFICATIONS

Working pressures: 0.1 bar min  
16.0 bar max

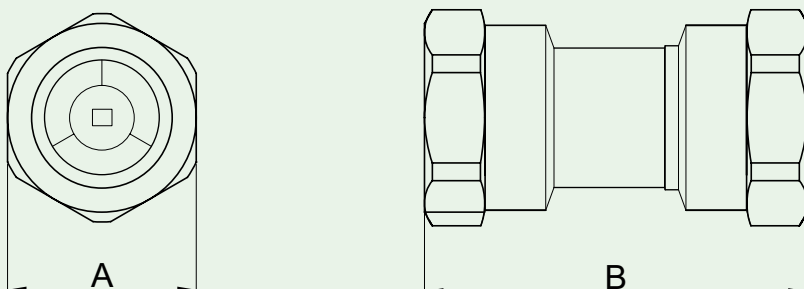
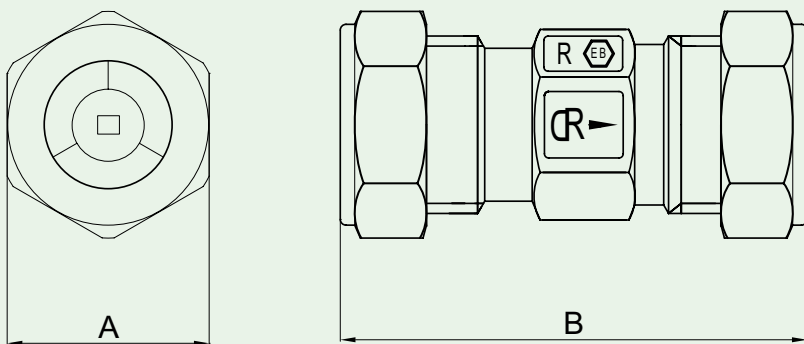
Maximum temperature: 85°C

## MATERIALS

Body: DZR brass  
Seals: EPDM  
Check cartridges: Acetyl copolymer  
Spring: Stainless steel

## DIMENSIONS

All dimensions in mm unless otherwise stated.



Product Code	Connection	A	B
FLOW235001	15mm	24	57
FLOW235002	22mm	32	63
FLOW235003	28mm	38	71

Product Code	Connection	A	B
FLOW235004	1/2" FBSP	25	51
FLOW235005	3/4" FBSP	31	60
FLOW235006	1" FBSP	38	67
FLOW235007	1 1/4" FBSP	46	76
FLOW235008	1 1/2" FBSP	52	83
FLOW235009	2" FBSP	65	103